

Community update for Barwon–Darling, Menindee Lakes and Lower Darling–Baaka River

Lake Pamamaroo Releases Reduced

Flows from **Lake Pamamaroo** will be reduced today (10 April) from 500 ML/day to 450ML/day to conserve water in the upper lakes while still maintaining dissolved oxygen (DO) at safe levels for fish health.

Lake Menindee Outlet will remain fully open, with a natural recession of flow as the lake level recedes. The MDBA will continue to reduce their call in line with this recession. The current flow of approximately 740 ML/d at Weir 32 are expected to decrease from Saturday (11 April) to a new target of 690 ML/d.

The dynamic nature of managing the water quality and overall resource in Menindee Lakes may result in changes to release patterns and flows occurring with little warning. WaterNSW advises users in the weir pool and downstream of Weir 32 that flows may fluctuate over the coming days and should be considerate of these changes.

Customers and landholders are advised to monitor warnings and river levels closely to make necessary arrangements to ensure infrastructure and livestock are not impacted. The department will continue to monitor water conditions in the weir pool, alter releases if required and communicate that to the community.

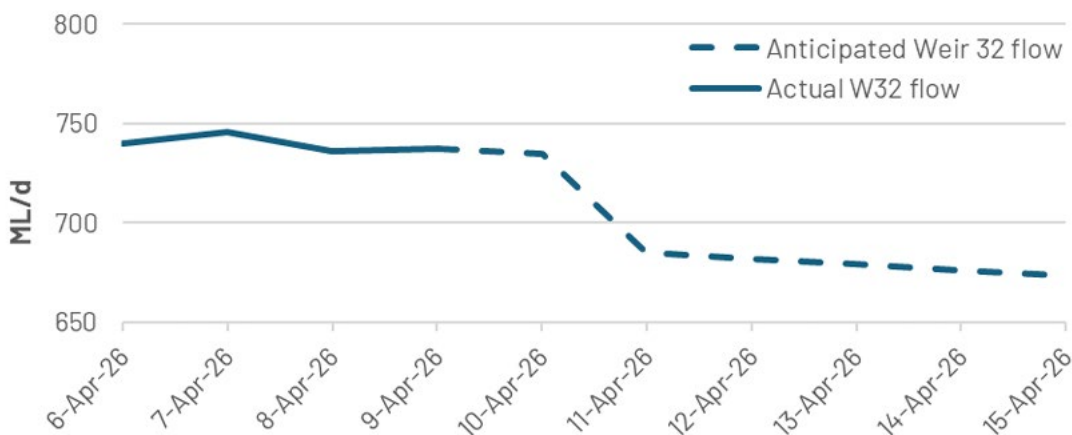


Figure 1. WaterNSW operational graph showing anticipated Weir 32 flow for the next week

Inflows

- WaterNSW released an updated inflow forecast on Wednesday (8 April). Flows from the Northern Basin have generally been receding over recent weeks.
- However, over the weekend, flows from Queensland, specifically from the Culgoa Catchment, connected with the Darling River, with increases in flow observed at Bourke.
- At this time, there are modest inflows forecast, driven by the Culgoa flows.
- As such, updated forecasting indicates a further 20 - 40 GL is expected to enter the Menindee Lakes by the end of May.
- Based on the current forecast inflows and releases which are subject to change WaterNSW has released the following proposed operating plan for Menindee Lakes.

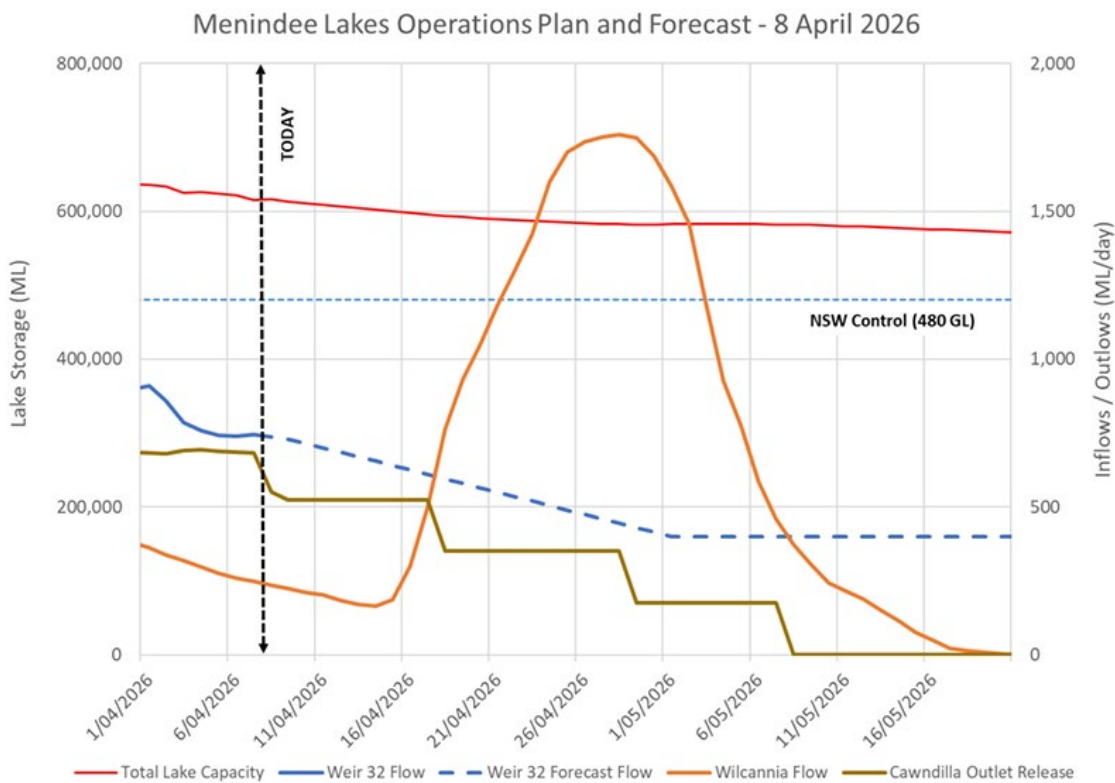


Figure 2. WaterNSW Menindee Lakes Operating Plan and Forecast (8 April)

Lake Cawndilla flows reduced- update from CEWO

Environmental flows have been released from Lake Cawndilla to the Great Darling Anabranch since December 2025. The Anabranch has connected all the way through to the River Murray. These flows are now starting to reduce. The recession at Lake Cawndilla outlet will be gradual over the next four

to five weeks to early May and will be made more gradual downstream of Packers Crossing which will remain open, so that flows return to the Anabranche from Kangaroo and Packers Lakes over late autumn and into winter. The flows are providing benefits for vegetation, waterbirds, native fish and other aquatic animals like yabbies. During autumn, ecological monitoring is being undertaken by the Nature Glenelg Trust and the CEWH's [FlowMER2.0 program](#).

Algae alerts

A further **RED** alert has been issued at Lake Wetherell Site 1 this month (see map below for location). Sunset Strip, Lake Menindee, Lake Menindee Outlet and Darling River at Weir 32 remain on **RED** alert. WaterNSW is currently undertaking weekly sampling at these sites.

Copi Hollow, Lake Cawndilla Outlet, Lake Pamamaroo Outlet and multiple sites along Lake Wetherell have **AMBER** alerts in place. Darling River pump station (Menindee), Lake Tandure, and Lake Pamamaroo centre have **GREEN** alerts in place.

Elsewhere around the region, Pooncarie, Burtundy, Ellerslie and Tapio remain on **AMBER**. Last month's sampling at Wilcannia, Tolarno and Pooncarie was postponed due to access issues.

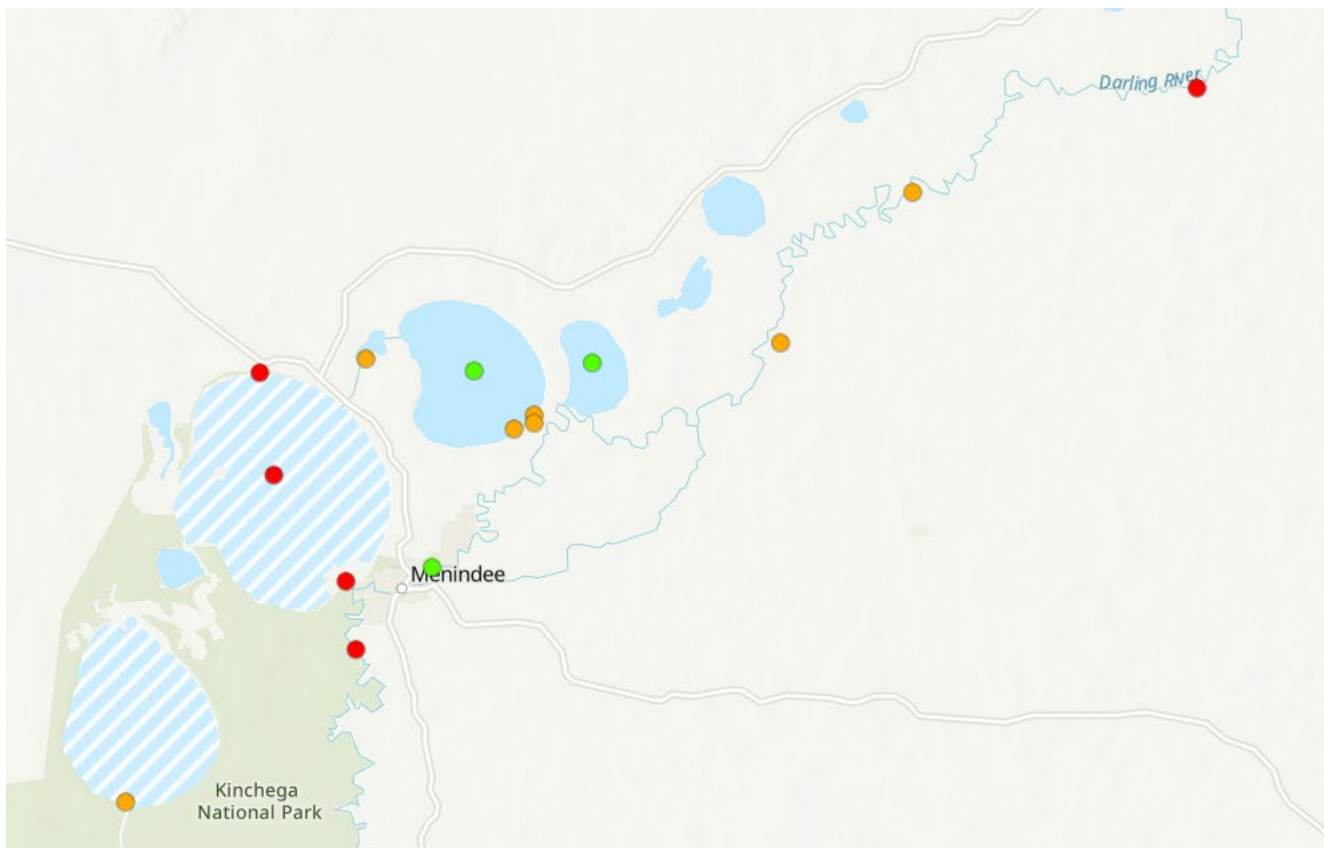
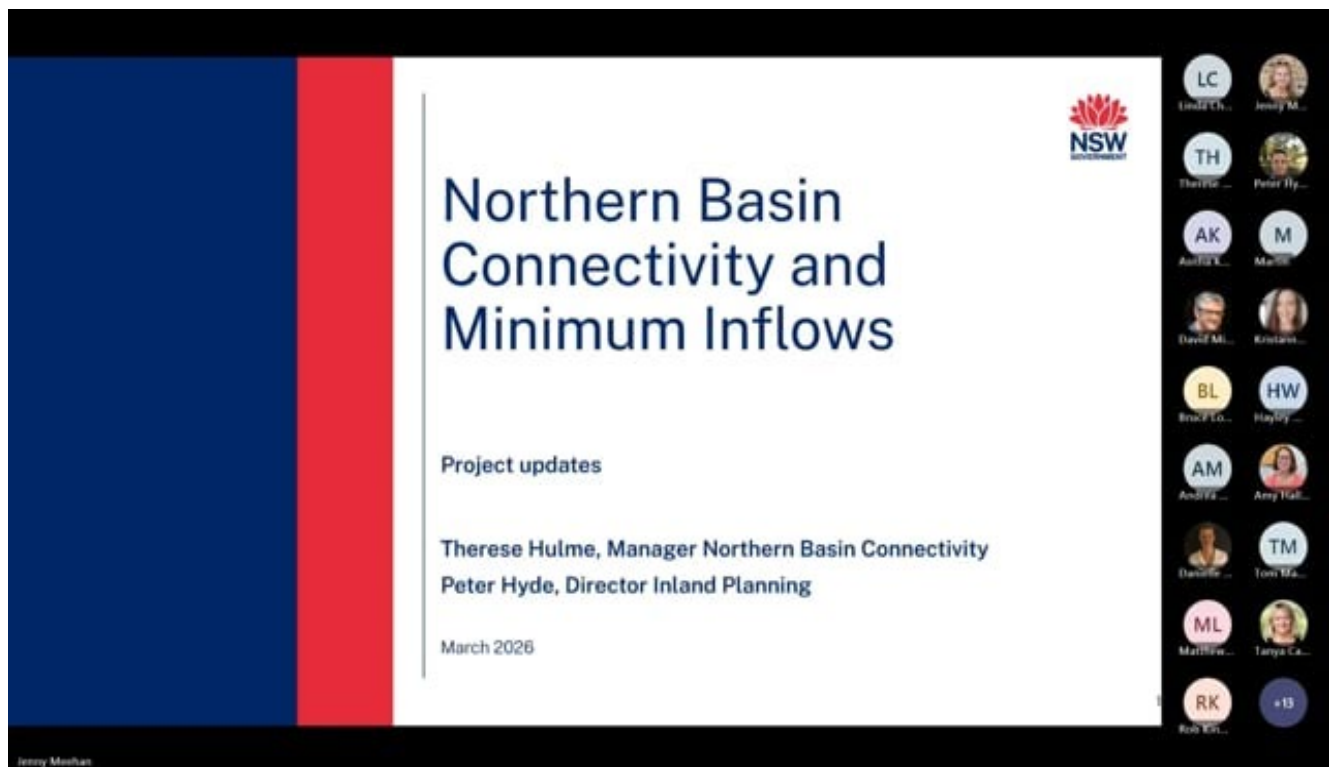


Figure 3: Screenshot of WaterNSW algae alerts of Menindee Region (9 April).

For the latest algal alerts and information, go to [Algae Alerts NSW map - WaterNSW](#)

Connectivity Webinar Recording

During March 2026 the department held public webinars on the Northern Basin Connectivity and Minimum Inflows project. We understand the Menindee/ Lower Darling communities are interested in how the department's connectivity work is progressing. If you were unable to attend a webinar, the recording link is on our website at: [Northern Basin Connectivity and Minimum Inflows projects meeting held 11 March 2026 | Videos & Movies on Vimeo](#)



More information

- To notify the NSW Department of Climate Change, Energy, the Environment and Water of potential blackwater events email: water.enquiries@dcceew.nsw.gov.au
- To view community updates issued, visit water.nsw.gov.au/menindee-updates
- If you've got any questions regarding this update or other water matters **contact your local implementation officer, Kate McBride on 0458 945 149** or kate.mcbride@dcceew.nsw.gov.au

- To report dead fish, fish struggling or gasping at the water surface, or crayfish leaving the water please call the **NSW Department of Primary Industry Fisheries Phonenumber 1800 043 536** or fill in a fish kill protocol and report form at:
www.dpi.nsw.gov.au/fishing/habitat/threats/fish-kills-2019-2020/info-sheet
- Information on recent fish deaths is available at: [Fish kills in NSW](#). When reporting, please include the name of the river/waterbody, location and date of your observation and provide photographs. If possible, please also record what species are affected and an estimate of number of each species observed.
- Further information on blackwater events can be found at the department’s website at:
water.nsw.gov.au/hypoxic-blackwater
- Additional information is also available on the Murray–Darling Basin Authority website at:
www.mdba.gov.au/climate-and-river-health/water-quality/fish-deaths
www.mdba.gov.au/water-management/infrastructure/menindee-lakes
- WaterNSW operational updates are available in [WaterInsights](#)
- Water quality data collected after the fish deaths at Menindee is available on the Environment Protection Authority web page at: www.epa.nsw.gov.au/working-together/community-engagement/updates-on-issues/menindee-fish-kill
- Real-time water quality data from the department – Strategic Science & Engagement monitoring buoys can be accessed from the [Darling–Baaka River Health Project dashboard](#)
- Data from the WaterNSW gauging network can be found in WaterInsights at:
<https://waterinsights.watarnsw.com.au/12104-lower-darling-regulated-river/river-data>