

# Community update for Barwon–Darling, Menindee Lakes and Lower Darling–Baaka River

## Lake Pamamaroo releases reduced

Flows from **Lake Pamamaroo** have been reduced today (14 April) from 450ML/day to 400ML/day to conserve water in the upper lakes while still maintaining dissolved oxygen (DO) at safe levels for fish health. The Menindee/ Lower Darling Water Quality Working Group (WQWG) met this morning to discuss releases and will reconvene later in the week to assess the impact of this reduction and the 'ground truth' models being used. The department will continue to monitor water quality conditions and change release patterns and flows earlier if required.

**Lake Menindee Outlet** will remain fully open, with a natural recession of flow as the lake level recedes. The MDBA will continue to reduce their call in line with this recession. The current discharge of approximately 640 ML/day at Weir 32 is expected to decrease in the coming days, to a new target of 590 ML/day due to the reduction of discharge from Lake Pamamaroo.

Customers and landholders are advised to monitor river levels closely to make necessary arrangements to ensure infrastructure and livestock are not impacted.

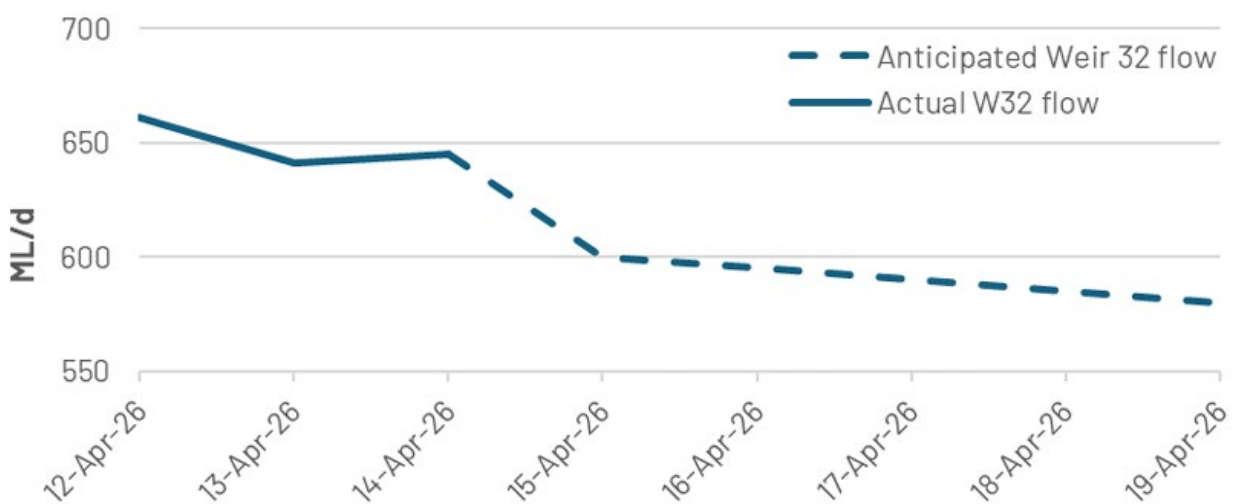


Figure 1. WaterNSW operational graph showing anticipated Weir 32 flow for the next week.

## Inflows

WaterNSW released an updated inflow forecast last week (8 April) which forecast a further 20-40 GL to enter the Menindee Lakes by the end of May. The inflows from the Culgoa catchment continue to move through the Darling system.

Discharge at Wilcannia has been very low and is currently 184 ML/day but this is expected to increase shortly. Upstream, Darling at Trevallyn has increased to 563 ML/day and Louth is today discharging 1,994 ML/day.

## Great Darling Anabranh flow recession

Following the Great Darling Anabranh connecting to the Murray River, the Commonwealth Environmental Water Holder (CEWH) has started the recession of Lake Cawndilla flows. The community will notice a gradual reduction in flows from Lake Cawndilla outlet over the next month. This reduction in flows will be made more gradual downstream of Packers Crossing, which will remain open.

The flows benefit vegetation, waterbirds, native fish and other aquatic animals like yabbies. During autumn, ecological monitoring is being undertaken by the Nature Glenelg Trust and the CEWH's [FlowMER2.0 program](#).

## Algae alerts

<b>RED</b>	<ul style="list-style-type: none"> <li>• Lake Wetherell Site 1, Sunset Strip, Lake Menindee, Lake Menindee Outlet and Darling River at Weir 32</li> <li>• Louth</li> <li>• WaterNSW will continue to undertake weekly sampling at these sites</li> </ul>
<b>AMBER</b>	<ul style="list-style-type: none"> <li>• Copi Hollow, Lake Cawndilla Outlet, Lake Pamamaroo Outlet and multiple sites along Lake Wetherell</li> <li>• Pooncarie, Burtundy, Ellerslie and Tapio</li> </ul>
<b>GREEN</b>	<ul style="list-style-type: none"> <li>• Darling River pump station (Menindee town), Lake Tandure, and Lake Pamamaroo centre</li> <li>• Bourke has returned to green alert level following the increase in flows.</li> </ul>

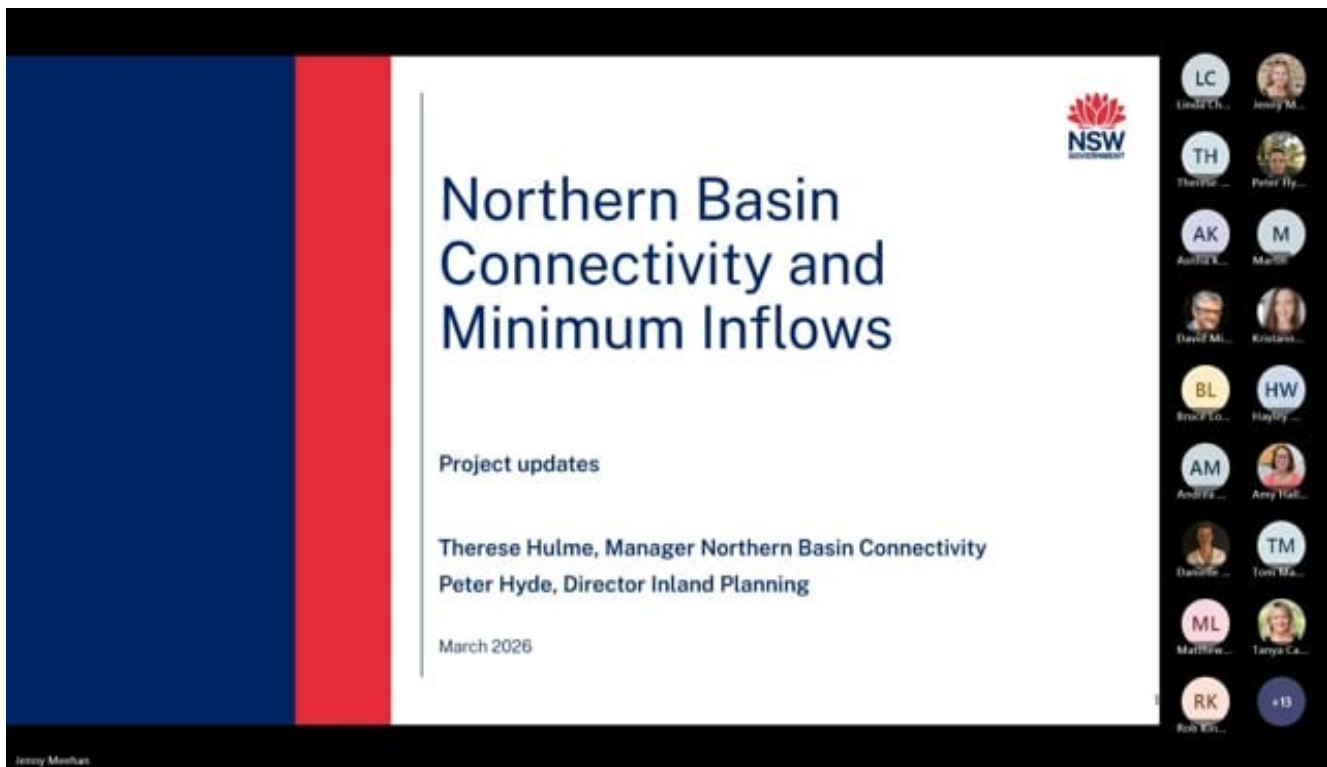
Note/s:

- Last month's sampling at Wilcannia, Tolarno and Pooncarie was postponed due to access issues however updated results are due later this week
- For the latest algal alerts and information, go to [Algae Alerts NSW map - WaterNSW](#)

---

## Connectivity Webinar Recording

During March 2026 the department held public webinars on the Northern Basin Connectivity and Minimum Inflows project. We understand the Menindee/ Lower Darling communities are interested in how the department's connectivity work is progressing. If you were unable to attend a webinar, the recording link is on our website at: [Northern Basin Connectivity and Minimum Inflows projects meeting held 11 March 2026 | Videos & Movies on Vimeo](#)



---

## More information

- To notify the NSW Department of Climate Change, Energy, the Environment and Water of potential blackwater events email: [water.enquiries@dcceew.nsw.gov.au](mailto:water.enquiries@dcceew.nsw.gov.au)
- To view community updates issued, visit [water.nsw.gov.au/menindee-updates](http://water.nsw.gov.au/menindee-updates)

- If you've got any questions regarding this update or other water matters **contact your local implementation officer, Kate McBride on 0458 945 149** or [kate.mcbride@dcceew.nsw.gov.au](mailto:kate.mcbride@dcceew.nsw.gov.au)
- To report dead fish, fish struggling or gasping at the water surface, or crayfish leaving the water please call the **NSW Department of Primary Industry Fisheries Phonenumber 1800 043 536** or fill in a fish kill protocol and report form at: [www.dpi.nsw.gov.au/fishing/habitat/threats/fish-kills-2019-2020/info-sheet](http://www.dpi.nsw.gov.au/fishing/habitat/threats/fish-kills-2019-2020/info-sheet)
- Information on recent fish deaths is available at: [Fish kills in NSW](#). When reporting, please include the name of the river/waterbody, location and date of your observation and provide photographs. If possible, please also record what species are affected and an estimate of number of each species observed.
- Further information on blackwater events can be found at the department's website at: [water.nsw.gov.au/hypoxic-blackwater](http://water.nsw.gov.au/hypoxic-blackwater)
- Additional information is also available on the Murray–Darling Basin Authority website at: [www.mdba.gov.au/climate-and-river-health/water-quality/fish-deaths](http://www.mdba.gov.au/climate-and-river-health/water-quality/fish-deaths)  
[www.mdba.gov.au/water-management/infrastructure/menindee-lakes](http://www.mdba.gov.au/water-management/infrastructure/menindee-lakes)
- WaterNSW operational updates are available in [WaterInsights](#)
- Water quality data collected after the fish deaths at Menindee is available on the Environment Protection Authority web page at: [www.epa.nsw.gov.au/working-together/community-engagement/updates-on-issues/menindee-fish-kill](http://www.epa.nsw.gov.au/working-together/community-engagement/updates-on-issues/menindee-fish-kill)
- Real-time water quality data from the department – Strategic Science & Engagement monitoring buoys can be accessed from the [Darling–Baaka River Health Project dashboard](#)
- Data from the WaterNSW gauging network can be found in WaterInsights at: <https://waterinsights.waternsw.com.au/12104-lower-darling-regulated-river/river-data>