



Department of Climate Change, Energy, the Environment and Water



Australian Government



Mundarlo Bridge replacement and Mundowry Lane raising projects

Business information session

August 2025

Acknowledgement of Country

The Department of Climate Change, Energy, the Environment and Water acknowledges that it stands on Aboriginal land.

We acknowledge the Traditional Custodians of the land and water, and we show our respect for Elders past, present and emerging.

We do this through thoughtful and collaborative approaches to our work, seeking to demonstrate our ongoing commitment to providing places in which Aboriginal people are included socially, culturally and economically.

Artist and designer Nikita Ridgeway from Aboriginal design agency – Boss Lady Creative Designs, created the People and Community symbol.



1

Introductions and purpose

Purpose

To provide you:

- an introduction to the projects
- the status of the projects
- an overview of the delivery methodology
- construction packaging
- other services likely required
- commercial arrangements
- how to contact us and register interest.

2

Introduction to projects

Location of projects



Status of projects

- Funding is secured from the Australian Government for the delivery of Mundowry Lane, Mundarlo Bridge, and Werai Forest projects.
- Both Mundarlo Bridge and Mundowry Lane are currently at preliminary design stage.
- Environmental and heritage approvals (REF) are expected to be finalised Q3 2025.



Survey work at Mundarlo Bridge, April 2025

3

Mundarlo Bridge

Mundarlo Bridge replacement: project overview

The Mundarlo Bridge near Gundagai will be replaced with a higher, two-lane structure to reduce overtopping and improve traffic flow for residents and heavy vehicles.

Project works include:

- completion of detailed design
 - bridge construction
 - civil works
 - approach road re-alignment
 - demolition of the old bridge.
-

Tenders estimated for release in late Q3



Mundarlo Bridge replacement: project overview



Avoid overtopping at times of high flows resulting in disruption to local communities



Less servicing and maintenance of new infrastructure



Less maintenance and clean-up costs as bridge is higher



New, higher and dual-lane for improved traffic flow for cars, farm machinery and trucks



Demolition of old bridge and approach road re-alignment

4

Mundowry Lane

Mundowry Lane raising: project overview

This project will elevate the southern section of Mundowry Lane near Collingullie to avoid road closure during high river flows, ensuring safer and more reliable access for local communities.

Project works include:

- culvert construction
 - civil and road works
 - asphalt laying for wearing surface.
-

Tenders estimated for release Q3



Mundowry Lane raising: project overview



Improved vehicle access during high flows. Raise of 1.5km section with 2-3 banks of culverts



Less overtopping of the road resulting in less disruption to communities



Eliminating the need for traffic control and lane closure with flows of up to 45,000 ML/day



Less servicing and maintenance of the road and road verges

5

Werai Forest

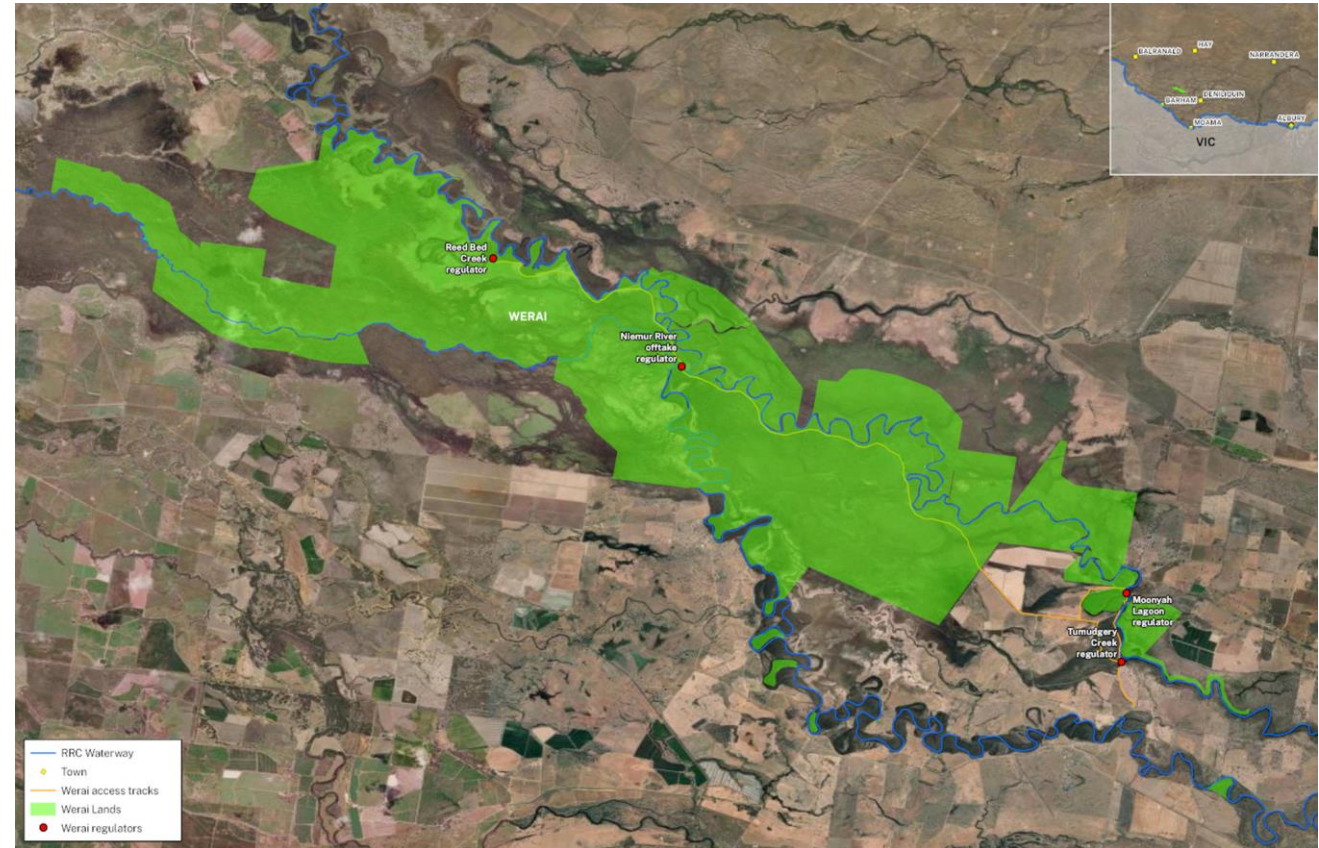
Werai Forest Regulators: project overview

Aging water infrastructure will be upgraded to enhance environmental flows, improve wetland health, and support cultural and ecological values important to First Nations communities.

Project works include:

- demolishing 3 existing regulators
- constructing 4 regulators
- access track upgrades as required for construction.

Tenders estimated for release in Q3



Werai Forest Regulators: project overview



Improved access and opportunities for First Nations people as owners of the forest



Improved local and regional environmental health of waterways and wetlands



Not suited to deliver environmental flows and obstruction to fish passage



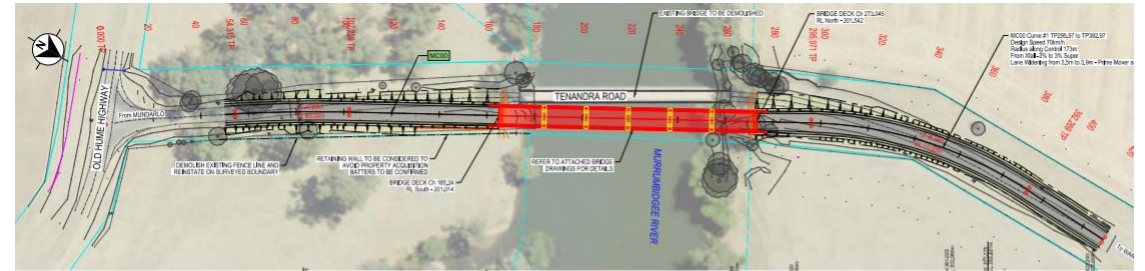
Improvement to RAMSAR listed waterway / wetland health, traditional Aboriginal forest owners

6

Design and approvals

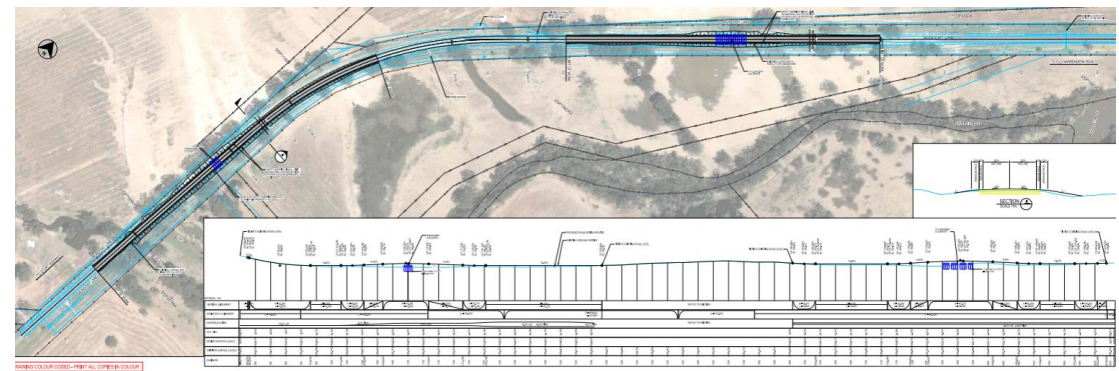
Murrumbidgee

- Preliminary designs for Mundarlo and Mundowry have been developed in accordance with a defined technical assurance pathway and in collaboration with asset owners.
- Project design focus groups include technical specialists and advisors from each local council as the asset owner.



Murray

- Werai Forest is progressing through final detailed design.



Environmental and cultural heritage approvals

- All projects are assessed to ensure we avoid, mitigate, manage and offset environmental and cultural heritage impacts.
- Planning assessments are completed as a Review of Environmental Factors and cover both construction and operation of the infrastructure.
- Complementary approvals, including Water Management Act and Fisheries Management Act approvals, and Aboriginal Heritage Impact Permits are obtained prior to construction.
- Mundarlo Bridge and Munday Lane projects will have planning approvals in place prior to construction.



Landholder access agreements

A range of **landholder access agreements** are needed for construction of the Murrumbidgee projects, including access agreements with some private landholders.

The specifics of each landholder agreement is being discussed in depth with the affected landholders by the project team.

Some landholders have access agreements in place, while others are still progressing, and **some won't be in place.**

Working with landholders to enable construction, while **minimising impact to their land**, is a focus.

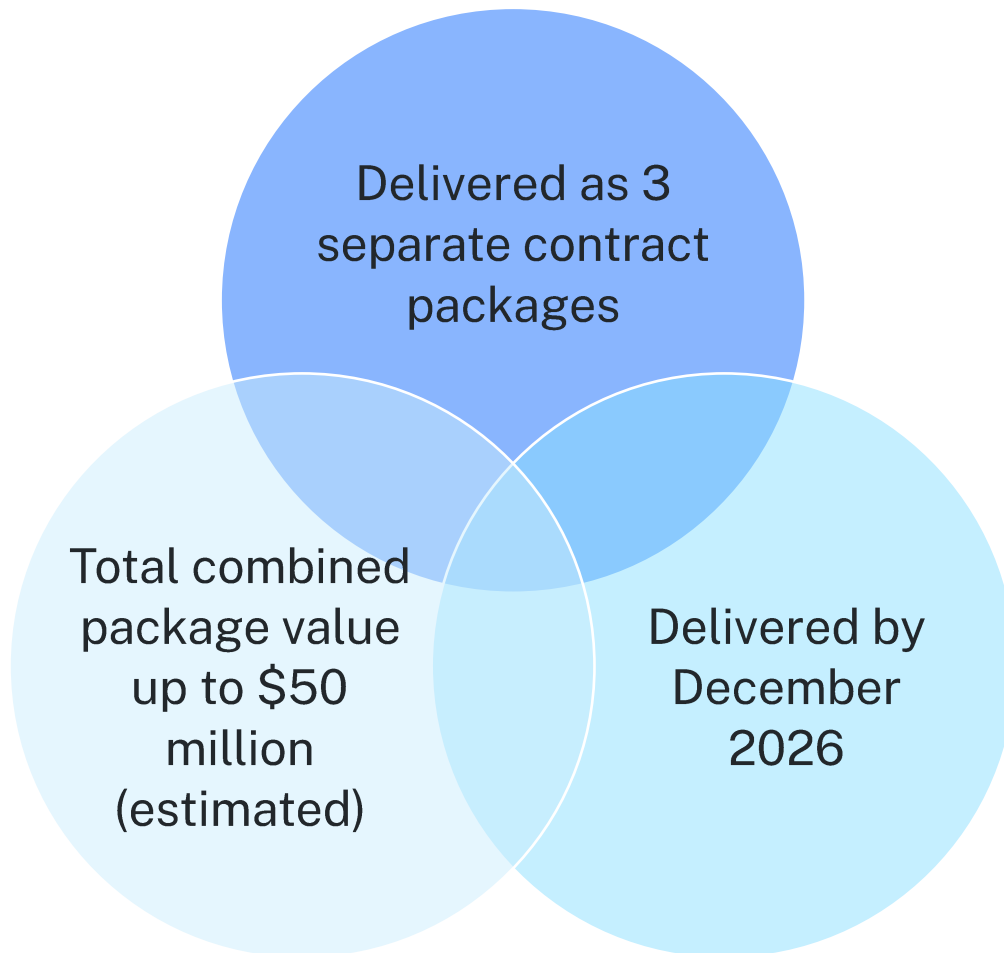
All agreements are executed by the **Water Administration Ministerial Corporation** – an administrative function of the department.



7

Delivery methodology and packaging

Projects delivery methodology



- Each package will be tendered to the open market with delivery methodology to be developed by tenderers.
 - Werai Forest (4 regulator sites)
 - Mundarlo Bridge
 - Mundowy Lane
- Each package will be using GC21 as basis of contract.
- Practical completion by Dec 2026.
- Handover / acceptance by April 2027.

Construction procurement

Code	Project	Site / sub-package	Package scope	Sites	Current contract or proposed procurement method	Expected package in market
WFW	Werai	<ul style="list-style-type: none"> Tumudgery Niemur River Reed Creek Moonyah Lagoon 	<ul style="list-style-type: none"> Replacement of existing regulators (3 sites) Construction of new regulator (Moonyah Lagoon) Access Tracks 	4	GC21 Construct Only – lump sum, SoR, open EOI followed by tender	Q3 2025
MBR	Mundarlo	<ul style="list-style-type: none"> Mundarlo Bridge 	<ul style="list-style-type: none"> New bridge and demolition of existing 	1	GC21 Design & Construct – lump sum, SoR, open market	Late Q3 2025
MLW	Mundowry	<ul style="list-style-type: none"> Mundowry Lane 	<ul style="list-style-type: none"> Sections of road raising and additional culverts 	1	Procurement approach under consideration.	Q3 2025








8

Other services

Direct construction supplies and services






The projects will require suppliers to construction contractors for successful program delivery.

A range of construction supplies and services will be needed including:

-  bulk materials –quarries, borrow pits, spoil disposal, concrete, road base
-  pre-cast materials –bridge planks, piles, wing walls, culverts
-  site survey and controls –e.g., traffic control, WHS, survey and setout
-  hazard tree site assessments and vegetation removal
-  surveillance for vegetation removal
-  salvage works in accordance with heritage impact permits
-  temporary facilities –offices, laydown yards, fencing, crib rooms, security systems.

Ancillary supplies and services

Other supplies and services may be required including:

-  accommodation – both short and medium term
-  photography, videography and drone imagery
-  printing and stationery
-  technology services
-  maintenance and service

9

Commercial

Construction procurement

Tender approach

Tenders included in the phased procurement approach will be issued as:

- open tenders, advertised on the NSW Government tender website
- GC21 contract model construct only and design and construct tenders - [GC21 Edition 2 | info.buy.nsw](#)
- lump sum and schedule of rates tenders - [Opportunities hub | buy.nsw](#)
- consistent approach, where possible, to tender requirements and contract terms.

Submission of tenders

To be notified of tender opportunities and to submit tenders. Tenderers need to register as a supplier on the NSW Government [buy.nsw](#) website.

- Register as a supplier - [Welcome to the supplier hub | buy.nsw](#)
- Website for tender opportunities and to submit tenders - [Opportunities hub | buy.nsw](#)

Commercial information – tender requirements



Conditions of tendering

- Mandatory criteria and the evaluation assessment criteria outlined in the tender documents
- Submit tenders in the required format:
 - ✓ Envelope 1 – non-price information
 - ✓ Envelope 2 – price information
- Agree to financial assessment
- WHS – OFSC Accreditation – Australian Government requirement for tenders estimated at >\$4m.
- WHS – principal contractor responsibility

Evaluation assessment criteria

- Experience and capability
- Methodology and risk management
- Program – schedule to complete
- Local industry and Aboriginal participation
- Tender price
- Acceptance of commercial terms
- [Aboriginal procurement policy | info.buy.nsw – tenders >\\$7.5M](#)

Commercial information – mandatory criteria

- **Insurances** - completed schedule of insurances –as required by the tender.

Principal arranged insurances	Contractor provided insurances	
<ul style="list-style-type: none"> • Contract works 	<ul style="list-style-type: none"> • Motor vehicle 3rd party property damage 	<ul style="list-style-type: none"> • Plant insurance
<ul style="list-style-type: none"> • General public liability 	<ul style="list-style-type: none"> • Marine insurance 	<ul style="list-style-type: none"> • Professional indemnity insurance (temporary works, permanent works if D&C)

- **Quality management system**

- ✓ Evidence of AS/NZS ISO 9001:2016 certification

- **WHS management system**

- ✓ Evidence of ISO 45001:2018 certification OR
- ✓ Details on how the tenderer will meet the requirements of ISO 45001:2018 AND/OR
- ✓ WHS system accredited with requirements set by the Office of the Federal Safety Commissioner (OFSC)

- **Environmental management system**

- ✓ Evidence of an EMS compliant with AS/NZS ISO 14001:2016 OR
- ✓ Evidence (from previous projects) on implementation of management of environmental matters in accordance with the NSW Government Environmental Management Guidelines for construction Edition 4.

Commercial information



NSW Government requirements

- Aboriginal procurement policy – NSW DCCEE Water Group policy target is 2.5% of contract price
[Aboriginal procurement policy | info.buy.nsw](#)
- Skills, training and diversity in construction (relevant for tenders >\$10M)
 - Commitment to engagement of apprentices to carry out work under contract and report on requirements
- Workplace relations management (relevant for tenders >\$10M)
<https://www.industrialrelations.nsw.gov.au/industries/key-industries-in-nsw/building-and-construction/>
- Compliance with NSW Supplier Conduct – Supplier Code, Industrial Relations Guidelines and Compliance dealing with Modern Slavery – [Supplier conduct | info.buy.nsw](#)

10

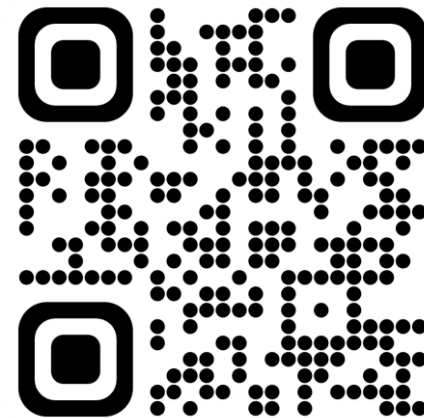
How to contact us

Contacts



Andrew Lavelle
Director, Infrastructure Delivery,
Water Group
0429 156 386
andrew.lavelle@dcceew.nsw.gov.au

Scan or click the QR code to
add your details to the Water
Group's water infrastructure
business register:



11



Questions

© 2025 State of NSW and Department of Climate Change, Energy, the Environment and Water

With the exception of photographs, the State of NSW and Department of Climate Change, Energy, the Environment and Water (the department) are pleased to allow this material to be reproduced in whole or in part for educational and non-commercial use, provided the meaning is unchanged and its source, publisher and authorship are acknowledged. Specific permission is required to reproduce photographs.

Learn more about our copyright and disclaimer at dcceew.nsw.gov.au/copyright